

# Oseki's COVID-19 Travel Guidelines

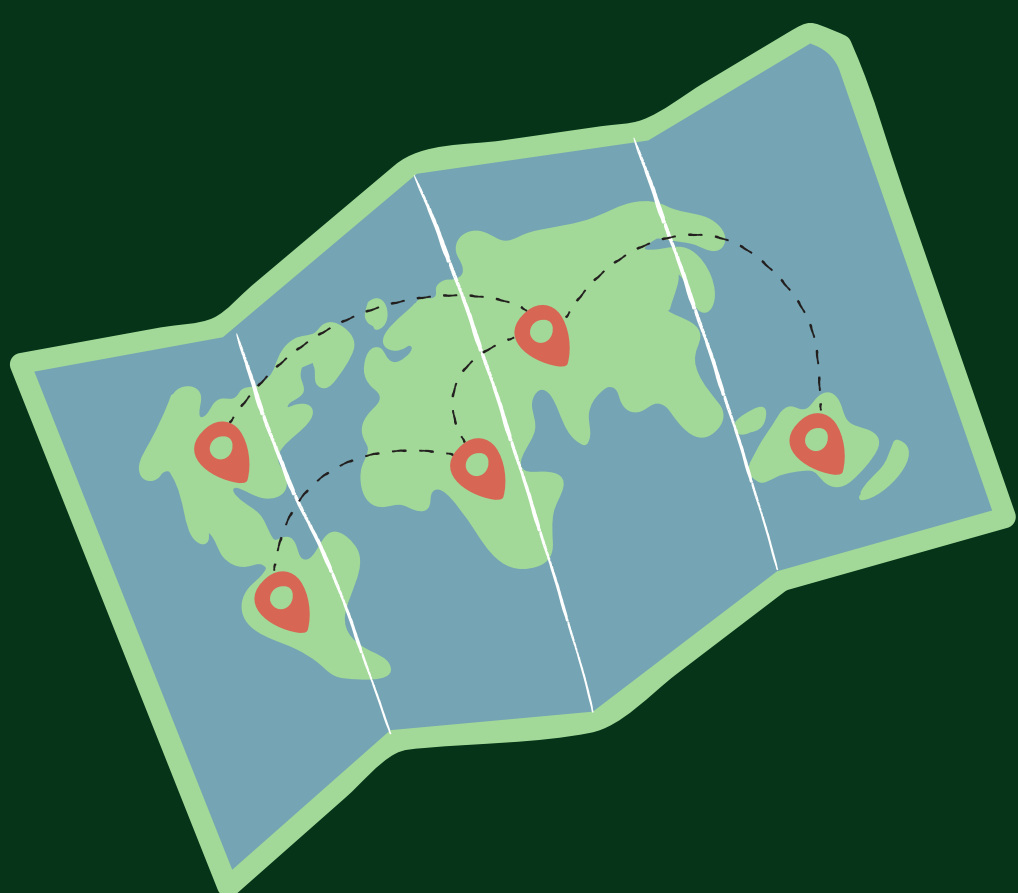
---

*Stayin'*

*safe*



IS SOMETHING WE DO  
TOGETHER!





DO YOU HAVE SYMPTOMS?

# COVID-19 Symptom list

Do you  
have these  
symptoms?

- Fever
- Cough
- Colds
- Headache
- Diarrhea
- Shortness of breath
- Sore throat
- Joint and Muscle Pain

Have you  
had Exposure?

- Travelled to other countries in the past 14 days
- Exposure to a confirmed COVID-19 patient
- Travelled to, reside, or work in local areas with reported COVID-19 cases
- Exposure to a Person Under Investigation (PUI) for COVID-19

With Exposure +  
With Symptoms:

- If young (<60 years old), with no other illnesses and mild symptoms: Conduct home quarantine.
- If elderly (>60 years old), with other illnesses and/or severe symptoms: Proceed to the Emergency Room for assessment.

With Exposure +  
No Symptoms:

- Conduct home quarantine for 14 days and monitor symptoms.
- Should symptoms start to develop, proceed to the Emergency Room for assessment.

No Exposure +  
With Symptoms:

- Manage symptoms accordingly. Proceed to the Emergency Room for assessment.

#StopTheSpread

# Why book now?

---

1). We currently have very flexible policies by changing dates

---

2). Help local tourism and the local economy, especially in regards to the current situation

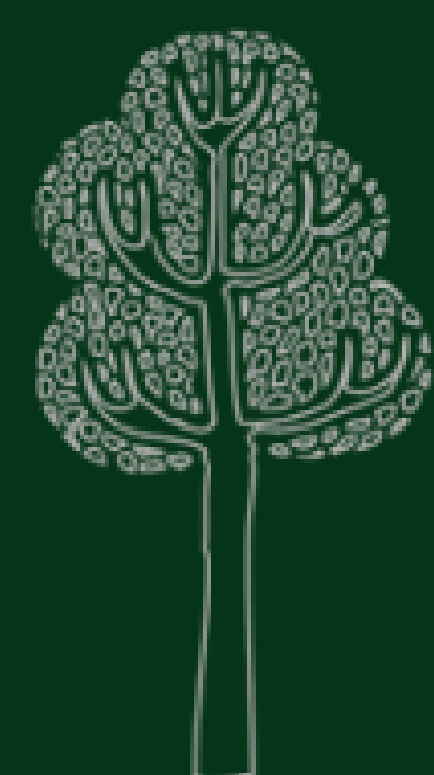
---

3). You get more value for your money now as the supply is big but the demand is little

---

4). To promote tourism back to the Mara, we make you special deal!

---



OSEKI MAASAI  
MARA CAMP

CREATE YOUR OWN EXPERIENCE

# Oseki's COVID-19

## Travel Guidelines

---

### 1,5 meter travel

- Travel with a travel agency who is up to date with the 1,5 meter travel guidelines
- Choose a country focused on nature and opt for self-drives
- We do not put travellers from different groups in the same safari vehicle
- We eat outside & clean all utensils after each use
- Every safari tent has it's own bathroom and patio on which we will serve your breakfast, lunch and dinner
- On our walks and hikes we highly focus on the 1,5 meter distance
- Our staff has a **non-covid certificate**, we ask our guests the same



# Oseki's COVID-19

## Travel Guidelines

---

### 1,5 meter travel

- We offer handsanitizers in each safari tent, please use them each time before going out
- Use a paper towel to clean hands
- Wear a mask in public places
- Or simply avoid public places & go into nature!
- Refrain from touching people outside your family/travel group
- Respect the 1,5 meter distance travel measurements!
- No handshakes, hugs or close proximity
- Get yourself a **non-covid travel certificate** via your travel clinic

## What we offer:

---

- We are taking extra safety measurement for our local team and travellers to make travelling still possible & to keep it like that
- We offer a corona-package upon arrival at Oseki Maasai Mara Camp which helps keep you safe during your time at our place
- This package includes a hand-sanitizer in each safari tent and wipes to keep your environment safe. We regurly clean the place
- We eat outside & keep the 1,5 distance accurate around the fireplace
- We are strict on the compliance of the rules
- We offer flexible booking- and changement conditions for our travellers

Stayin'  
safe

IS SOMETHING WE DO  
TOGETHER

